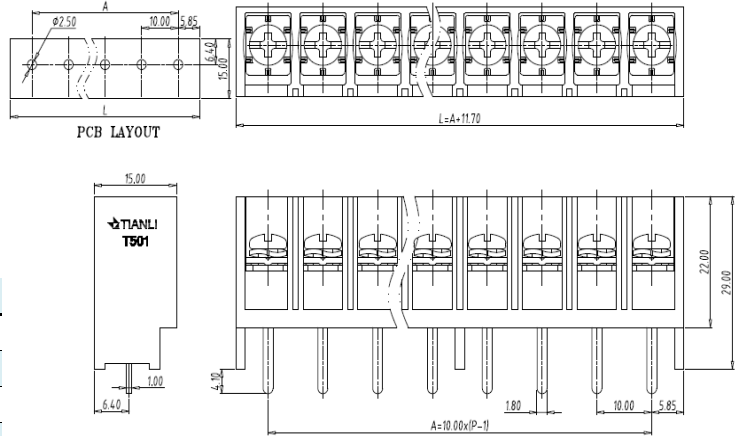


PCB terminal block — BARRIER SERIES — T501H-21



图示(Pic. shown) : T501H-21-04P-KC

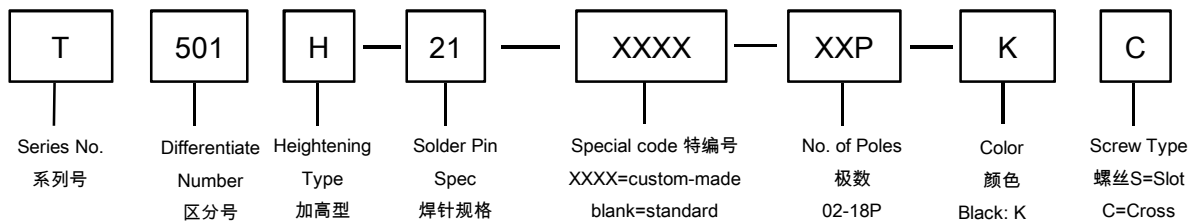
General:

PCB terminal block	Rated : 300V,30A , 22-10 Sol&Str
Single row , 10.0mm pitch , 02-18 Pole	
Wiring orientation: 180°(wire-to-board)	
Screw clamp unit: M4.0, 1.4Nm Max	

认证 (Approval) :

技术参数 Technical Data	UL standard			IEC standard		
UL应用组别(UL Application group)	UL Application group			IEC过电压别/污染等级(IEC overvoltage category /pollution degree)		
IEC过电压别/污染等级(IEC overvoltage category /pollution degree)	B	C	D	III / 3	III / 2	II / 2
额定电压(Rated voltage)	300V	300V	600V	630V	1000V	1000V
额定电流(Rated current)	30A	30A	5A	41A	41A	41A
额定连接容量(Rated connection capacity)	22-10AWG Sol&Str			0.75-6mm ² Sol&Str		
绝缘材料(Insulation Material)	PBT					
电流承载部件材料和镀层(Material & Plating of Current carrier)	Copper alloy , Tin plated					
接线弹片材料(Material of Clamp spring)	--					
绝缘电阻(Insulation Resistance)	500MΩ or more at DC500V					
耐电压(1分钟)(Withstanding Voltage/1Min)	4200V					
额定冲击电压(Rated surge voltage)	8KV					
接线螺丝(Wire clamp unit Screw) , 最大扭矩(torque Max.)	M4.0 , 1.4Nm Max					
固定螺丝(Mounting Screw) , 扭矩(torque)	--					
剥线长度(Wire stripping length)	--					
使用温度(Operating temperature)	-40°C up to +120°C					
焊接方式(Soldering recommend)	Wave soldering ,260°C 5S Max (Single Wave) , 260°C 10S Max(Double Wave)					

订购方式(How to order)



Web:www.china-tianli.com TEL:+86-574-6347-9600,6389-6436 Mail : sale@china-tianli.cn
地址:中国浙江省宁波杭州湾新区庵东工业园区纬三路138号
ADD : 138 , Weisan Rd.,Andong Development Zone, Hangzhou Bay Area, Ningbo, Zhejiang, China