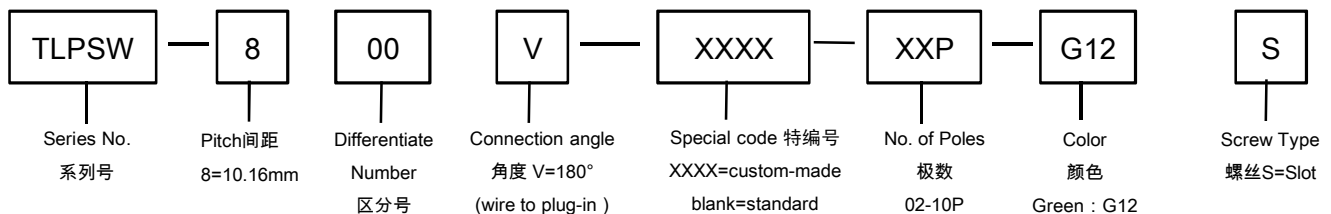


General:	图示(Pic. shown) : TLPSW-800V-04P-G12S
	PCB Connector Rated : 1000V,76A 0.5-16mm ²
	Single row , 10.16mm pitch , 02-10 Pole
	Orientation:180°(wire to plug-in)

认证 (Approval) :

技术参数 Technical Data	UL standard			IEC standard		
UL应用组别(UL Application group)	UL Application group			IEC过电压别/污染等级(IEC overvoltage category /pollution degree)		
IEC过电压别/污染等级(IEC overvoltage /pollution degree)	B	C	D	III / 3	III / 2	II / 2
额定电压(Rated voltage)	600V	600V	600V	1000V	1000V	1000V
额定电流(Rated current)	55A	55A	5A	76A	76A	76A
额定连接容量(Rated connection capacity)	20-6 AWG			0.5-16 mm ²		
绝缘材料(Insulation Material)				PA66 UL94 V-0		
电流承载部件材料和镀层(Material & Plating of Current carrier)				Copper alloy , Tin plated		
接线弹片材料(Material of Clamp spring)				Stainless Steel		
绝缘电阻(Insulation Resistance)				500MΩ or more at DC500V		
耐电压(1分钟)(Withstanding Voltage/1Min)				2200V		
额定冲击电压(Rated surge voltage)				8000V		
接线螺丝(Wire clamp unit Screw) , 最大扭矩(torque Max.)				M4, 1.8N.m		
固定螺丝(Mounting Screw) , 扭矩(torque)				M3, 0.5N.m		
剥线长度(Wire stripping length)				13 mm		
使用温度(Operating temperature)				-40°C up to +115°C		
焊接方式(Soldering recommend)				--		

订购方式(How to order)

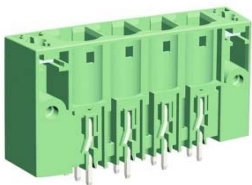


■ 编码片 Coding key

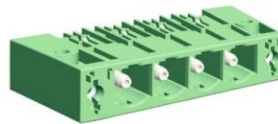


P/N:
TLPCK-004-S

■ 针座 (Pin header) — single row



P/N : TLPHW-800V
Orientation :
90° (plug-in to board)
Rated:1000V,76A
With threaded flange



P/N : TLPHW-800R
Orientation :
180° (plug-in to board)
Rated:1000V,76A
With threaded flange

■ 针座 (Pin header) — single row



P/N : TLPHW-800RL
Orientation :
180° (plug-in to board)
Rated:1000V,76A
With threaded flange