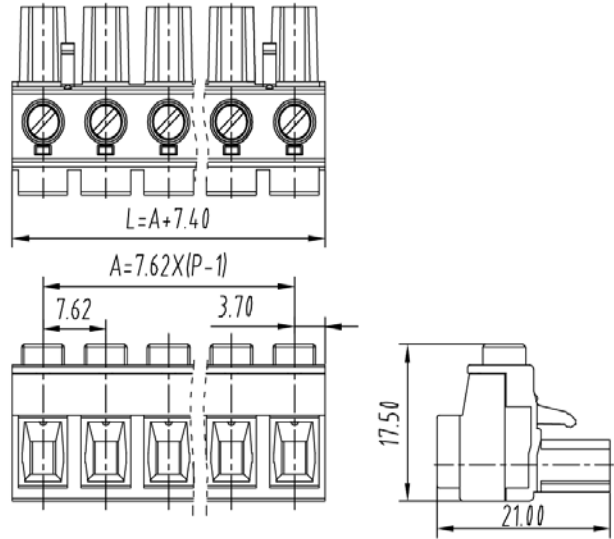


PCB Connector — TLP series (Female Connector)— TLPS-502



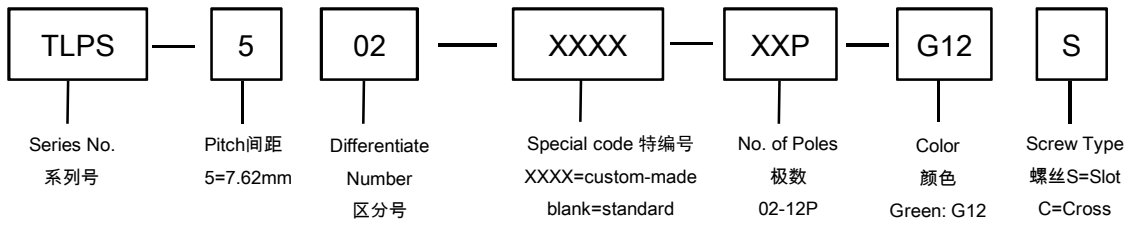
图示(Pic. shown) : TLPS-502-04P-G12S

General.	PCB Connector Rated : 1000V,24A , 2.5mm ²
	Single row , 7.62mm pitch , 02-12 Pole
	Wiring orientation: 180°(wire to plug-in)
	Screw clamp unit: M3.0, 0.7Nm Max

认证 (Approval) :

技术参数 Technical Data	UL standard			IEC standard		
UL应用组别(UL Application group)	UL Application group			IEC过电压别/污染等级(IEC overvoltage category /pollution degree)		
IEC过电压别/污染等级(IEC overvoltage category /pollution degree)	B	C	D	III / 3	III / 2	II / 2
额定电压(Rated voltage)	600V	600V	600V	--	630V	--
额定电流(Rated current)	20A	20A	5A	--	24A	--
额定连接容量(Rated connection capacity)	30-12AWG Sol&Str			0.2~2.5mm ² Sol&Str,4.0mm ² Sol Max		
绝缘材料(Insulation Material)	PA66 UL94 V-0					
电流承载部件材料和镀层(Material & Plating of Current carrier)	Copper alloy , Tin plated					
接线弹片材料(Material of Clamp spring)	--					
绝缘电阻(Insulation Resistance)	500MΩ or more at DC500V					
耐电压(1分钟)(Withstanding Voltage/1Min)	3300V					
额定冲击电压(Rated surge voltage)	6000V					
接线螺丝(Wire clamp unit Screw) , 最大扭矩(torque Max.)	M3.0 , 0.7Nm Max					
固定螺丝(Mounting Screw) , 扭矩(torque)	--					
剥线长度(Wire stripping length)	8.0mm					
使用温度(Operating temperature)	-40°C up to +115°C					
焊接方式(Soldering recommend)	--					

订购方式(How to order)

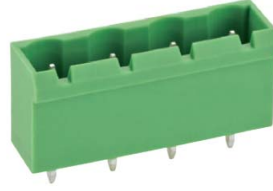


Web:www.china-tianli.com TEL:+86-574-6347-9600,6389-6436 Mail : sale@china-tianli.cn
 地址:中国浙江省宁波杭州湾新区庵东工业园区纬三路138号
 ADD : 138 , Weisan Rd.,Andong Development Zone, Hangzhou Bay Area, Ningbo, Zhejiang, China

■ 针座 (Pin header) — single row



P/N : TLPH-500V
Orientation :
90° (plug-in to board)
Rated:630V,24A
Open side



P/N : TLPHC-500V
Orientation :
90° (plug-in to board)
Rated:630V,24A
Closed side



P/N : TLPH-500R
Orientation :
180° (plug-in to board)
Rated:630V,24A
Open side



P/N : TLPHC-500R
Orientation :
180° (plug-in to board)
Rated:630V,24A
Closed side