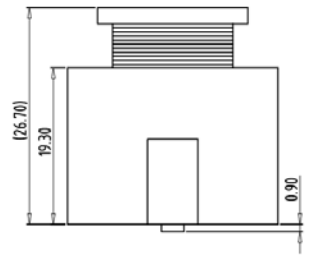
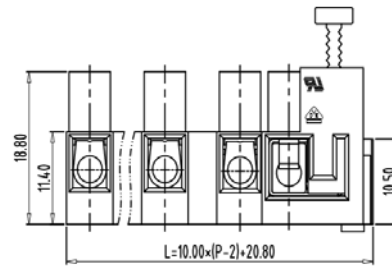
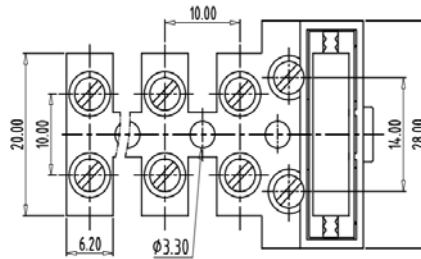
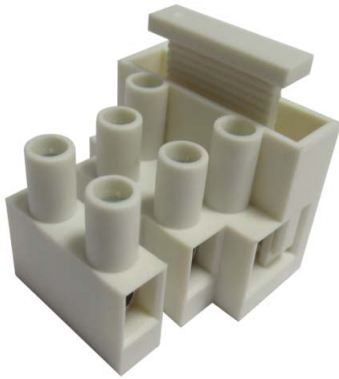


Fuse Terminal Block — TLF series — TLF-100-A



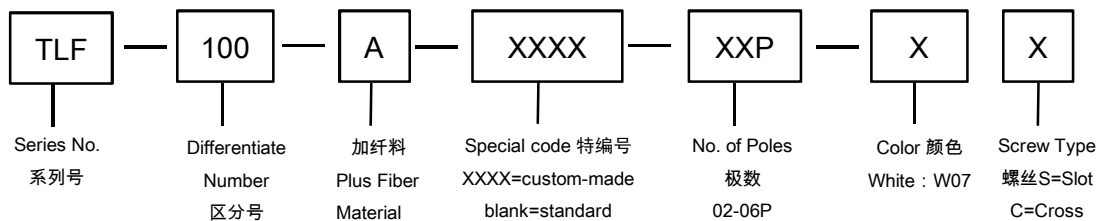
图示(Pic. shown) : TLF-100-A-03P-W07S

General.	Fuse Terminal Block Rated : 450V,24A , 2.5mm ²
	Single row , 10.00mm pitch , 02-06 Pole
	Wire-to-Wire Connection
	Screw clamp unit: M3, 0.5Nm Max

认证 (Approval) :

技术参数 Technical Data	UL standard			IEC standard		
◆ FUSE BLOCK	300V, 13A, 20-14 AWG Sol&Str			250V, 6.3A, 0.5-2.5mm ²		
◆ TERMINAL BLOCK						
UL应用组别(UL Application group)	UL Application group			IEC过电压别/污染等级(IEC overvoltage category /pollution degree)		
IEC过电压别/污染等级(IEC overvoltage category /pollution degree)	B	C	D	III / 3	III / 2	II / 2
额定电压(Rated voltage)	300V	--	300V	--	450V	--
额定电流(Rated current)	30A	--	10A	--	24A	--
额定连接容量(Rated connection capacity)	18-10AWG Sol&Str			0.5-2.5mm ²		
绝缘材料(Insulation Material)				PA66 UL94 V-0		
电流承载部件材料和镀层(Material & Plating of Current carrier)				Copper alloy , Ni plated		
绝缘电阻(Insulation Resistance)				500MΩ or more at DC500V		
耐电压(1分钟)(Withstanding Voltage/1Min)				Terminal Block: 2500V / Fuse Block: 2000V		
额定冲击电压(Rated surge voltage)				--		
接线螺丝(Wire clamp unit Screw) , 最大扭矩(torque Max.)				M3 , 0.5Nm Max		
接地螺丝(Grounding Screw) , 扭矩(torque)				--		
剥线长度(Wire stripping length)				Terminal Block: 7.0mm / Fuse Block: 7.0mm		
使用温度(Operating temperature)				Terminal Block:-30°C up to +105°C / Fuse Block: -30°C up to +40°C		

订购方式(How to order)



Web:www.china-tianli.com TEL:+86-574-6347-9600,6389-6436 Mail : sale@china-tianli.cn
地址:中国浙江省宁波杭州湾新区庵东工业园区纬三路138号
ADD : 138 , Weisan Rd.,Andong Development Zone, Hangzhou Bay Area, Ningbo, Zhejiang, China